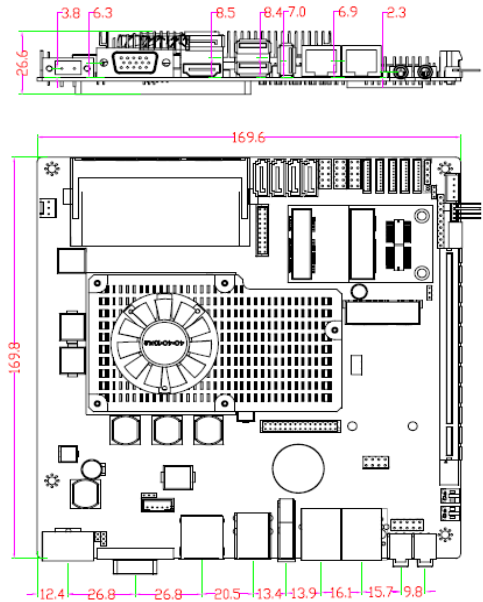
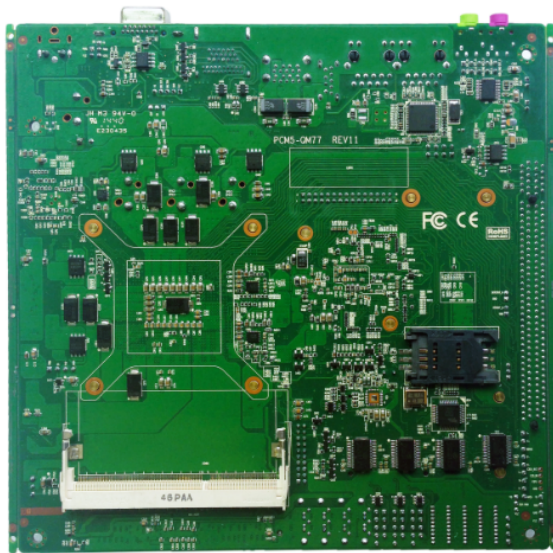


## 规格参数

规格参数	外形尺寸	170 × 170 (mm)
	电源供电	宽压9V-25V供电
	看门狗	255级, 可编程秒/分, 超时中断或系统复位
	净重量	0.35kg(含散热片)
	散热方式	风扇散热
	工作环境	环境温度-20℃-60℃, 环境湿度5% - 95% (非凝结状态)
	存储环境	环境温度-40℃-60℃, 环境湿度5% - 95% (非凝结状态)
系统配置	处理器	标配默认不含CPU PGA 988针 可选配: Intel I3-3110M, 主频2.4GHZ, 35W Intel I5-3210M, 主频2.5GHZ-3.1GHZ, 35W Intel I7-3610QM, 主频2.3GHZ-3.3GHZ, 45W
	芯片组	Intel QM77
	内存	2×DDR3内存槽, 可插2G, 4G, 8G内存条
	硬盘接口	4×SATA3.0, 1×M-SATA
	支持系统	XP, Win7、Linux、Win8
I/O接口	网口	2×10/100/1000Mbps RJ45网口, 集成intel 82583V/82579LM芯片
	串口	6个内接串口(1×RS485/422排针, 5×RS232串口内接座)
	USB	板载3×USB 3.0端口, 内接6×USB 2.0排针
	GPIO	1×8位GPIO排针
	显示	板载1×VGA端口、1×HDMI端口、1×DP端口, 内接18/24位LVDS、1×EDP排针, 集成Intel HD4000显示芯片
	音频	板载1×MIC-in孔, 1×Line-out孔, 集成声卡ALC892内接2×2W功放座
触摸功能		1×触摸功能(4线/5线/8线任选)
其他功能		风扇座, 2×min-PCIE(选增Wifi、3G模块), 1×SIM卡槽

## 订购信息

型号	配置	配置描述
PCM5-QM77	标准配置	2个网口, 1×VGA, 1×HDMI, 1×DP, 1×EDP, 6×COM, 1×18/24 Bit LVDS, 1×GPIO, 4×SATA3.0, 1×MSATA, 2×MPCie, 1×PCIE 16X, 1×SIM卡槽, 1组AUD电源, 带触摸屏控制(4/5/8线)
	标准配件	5条COM线, 1条SATA线, 1条SATA电源线, 电源接头, 带风扇散热片。
	升级选配	i3/i5/i7CPU, 2G/4G/8G内存, 16G/32G/64G/硬盘, wifi模块, 3G模块



## Features

Mechanical	Dimensions	170 ×170 (mm)
	Power supply	9V-25V
	Watchdog timer	0-255s
	Net weight	0.35kg (Including heatsink)
	Thermal methods	Fan
	Working Temp.	Working Temperature:-20℃-60℃, Working Humidity:5% - 95%
	Storage Temp.	Storage Temperature:-40℃-60℃, Storage Humidity:5% - 95%
System	CPU	Without CPU(Default) Supports: Intel I3-3110M, 2.4GHZ, 35W Intel I5-3210M, 2.5GHZ-3.1GHZ, 35W Intel I7-3610QM, 2.3GHZ-3.3GHZ, 45W
I/O	Chipset	Intel QM77
	Memory	2×DDR3, supports SO-DIMM 2G/4G/8G
	SATA	4×SATA3.0, 1×M-SATA
	System	XP/Win7/Linux/Win8
	LAN	2×10/100/1000Mbps RJ45, Integrate intel 82583V/82579LM Chip
	Serial ports	6×COM(1×RS485/422 PIN, 5×RS232 Inner)
	USB	Onboard 3×USB 3.0, 6×USB 2.0 pin
	GPIO	1×GPIO 8Bits(4in/4out)
	Display	Onboard 1×VGA/1×HDMI/1×DP, 18/24 LVDS/1×EDP PIN, Integrate Intel HD4000 video chipset
	Audio	Onboard1×MIC-in connector, 1×Line-out connector, Integrate ALC892 2×2W AMP (Inner)
	Touch function	1(4/5/8 wire)
	Others	Fan connector, 2×min-PCIE(Wifi/3G/4G), 1×SIM slot

## Order Information

Model	Configuration	Description
PCM5-QM77	Configuration	2×LAN, 1×VGA, 1×HDMI, 1×DP, 1× EDP, 6×COM, 1×18/24 Bit LVDS, 1×GPIO, 4×SATA3.0, 1×MSATA, 2×MPCie, 1×PCIE 16X, 1×SIM slot, 1×AUD power, Touch screen control(4/5/8 wire)
	Standard Configuration	5×COM Cable, 1×SATA Cable, 1×SATA, Power connector Cable, fan heatsink.
	Standard Accessories	i3/i5/i7 CPU, SO-DIMM:2G/4G/8G, SSD:16G/32G/64G/ Wifi/3G/4G